

ARCADIA

DECK PLANS

ARCADIA

83,781 tons
Entered service in 2005
Normal operating capacity:
2,094 passengers and 866 crew

Suite with Bath/Shower

B1	B2	B Deck
B4	A, B, C, D & E Deck	

Mini-Suite with Bath/Shower

CA	CB	B Deck
CE	B, D & Sun Deck	

Deluxe Balcony with Bath/Shower

EA	C & D Deck
EB	A, B, C & D Deck
EC	A, E & Sun Deck
ED	B, C & D Deck
EE	A, B, C, D & E Deck
EF	A, E & Sun Deck

Outside with Bath/Shower

LB	LC	G Deck
LE	C & G Deck	
LF	G Deck	

Outside (Obstructed View) with Bath/Shower

NB	NC	E Deck
-----------	-----------	--------

Larger Inside with Shower

OA	C Deck
OB	C & G Deck
OC	A, G & Sun Deck

Inside with Shower

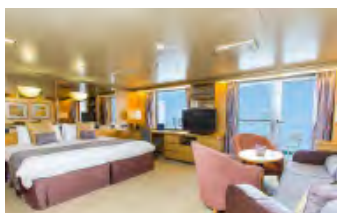
PA	B Deck
PB	A & B Deck
PD	B, C & D Deck
PE	A, B, C, D & E Deck
PF	A & E Deck

Single Balcony with Shower

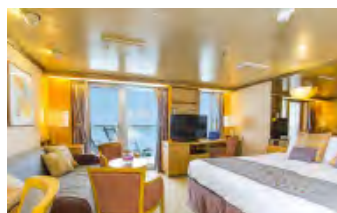
QF	Sun Deck
-----------	----------

Single Inside with Shower

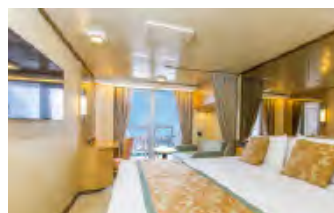
SC	Sun Deck
-----------	----------



Suite



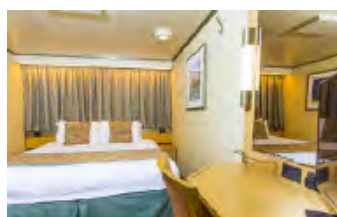
Mini-Suite



Deluxe Balcony



Outside



Inside



Single Inside

SKY DECK

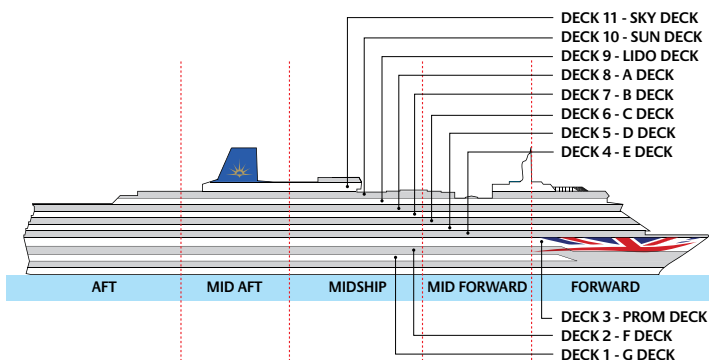
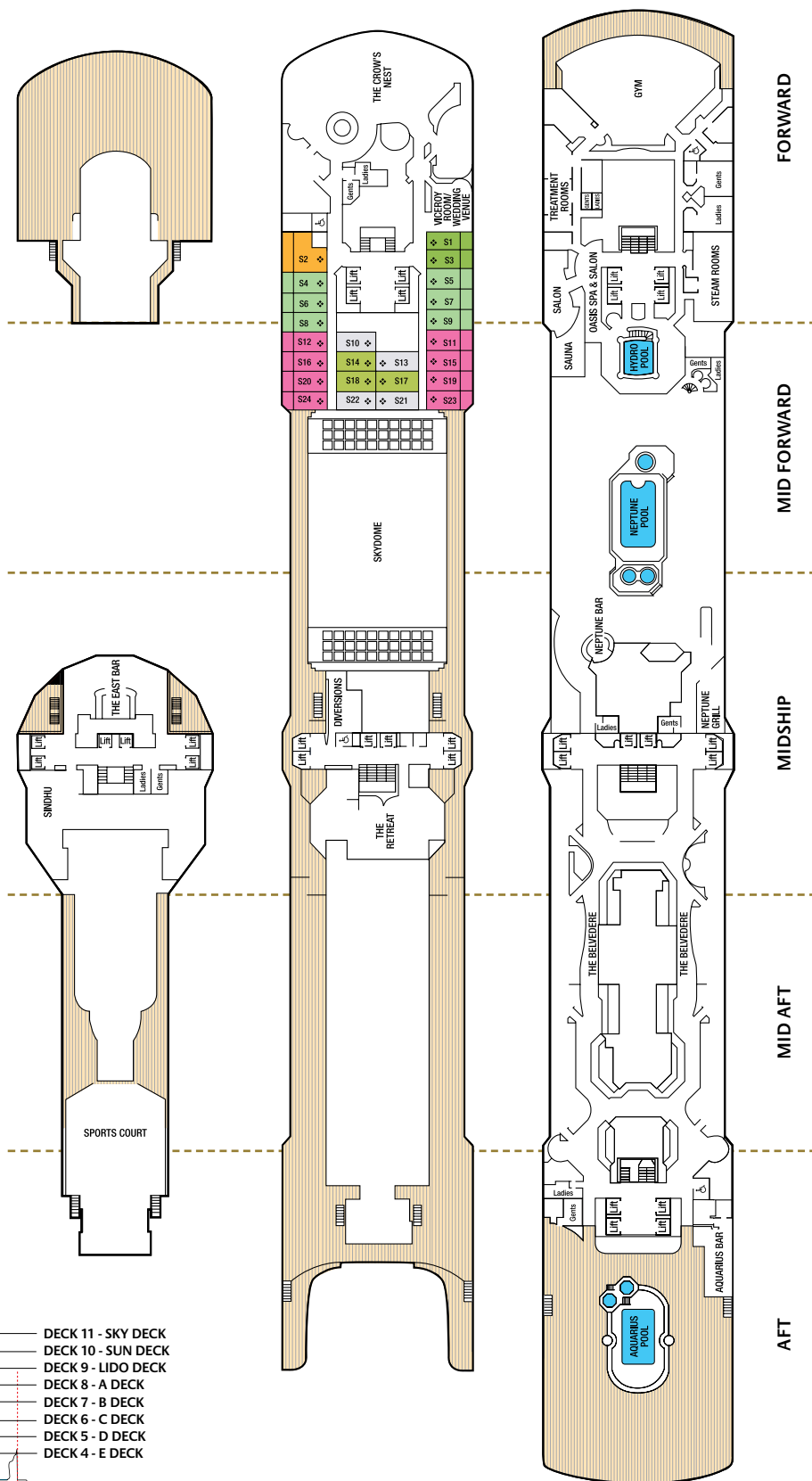
SUN DECK

LIDO DECK

CABIN NOTES

- * Cabin has one additional bed in the form of a single sofa bed
- ** Cabin has two additional beds, one in the form of a single sofa bed and one in the form of an upper pullman berth
- ❖ Cabins with shower only
- # Steel fronted balcony
- π Cabins overlooked by glass lifts
- v Overlooked by balconies above
- Cabins with interconnecting doors
- ♿ All adapted cabins have a shower only, with the exception of suites/mini-suites which have standard bath and separate shower. The following cabins C194, C203, C1, C2, E95, E96, G11, G12, G74, G81 and G82 are suitable for un-confined wheelchair access, however, please be aware that opening the door from within the cabin will require assistance from an able-bodied companion.

Note: All upper berths in twin cabins are accessible via a ladder. When upper berths are in use lower berths cannot be converted to a double.



D DECK



E DECK

PROM DECK

F DECK

G DECK

